

PRODUCTS CATALOGUE



VLT
VISION LIGHT
INNOVATIVE LIGHTING SOLUTIONS
VL



Vision Light.

Vision Light has been characterized by the design and quality of light fittings and today it has been consolidated as one of the leading companies in the Kuwait lighting market. Vision Light offers a wide variety of products, matching with customer's requirement and supplying product to the high quality standard whether they are classical or modern or traditional.

Interior.
Lighting Solution



Fiber Optics.
Lighting Solution



Exterior.
Lighting Solution

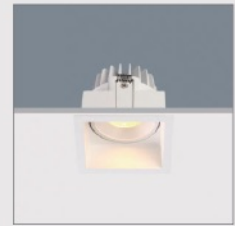




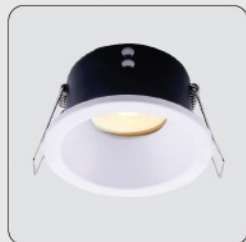
MODEL:	6020
POWER:	10W
CCT:	3000K
Lumens:	900
IP:	44
Cutting Size:	83



MODEL:	6215
POWER:	10W
CCT:	3000K
Lumens:	900
IP:	44
Cutting Size:	83



MODEL:	TS 6261
POWER:	10W
CCT:	3000K
Lumens:	900
IP:	65
Cutting Size:	75mm



MODEL:	TS 6262
POWER:	10W
CCT:	3000K
Lumens:	900
IP:	65
Cutting Size:	75mm

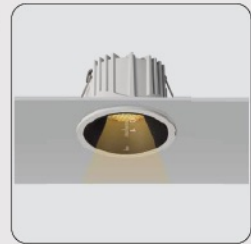




MODEL:	D8543-3
POWER:	30W
CCT:	3000K
Lumens:	3000
IP:	44
Cutting Size:	240*75mm



MODEL:	D8543R
POWER:	10W
CCT:	3000K
Lumens:	1000
IP:	44
Cutting Size:	75mm



MODEL:	D8543-2
POWER:	20W
CCT:	3000K
Lumens:	2000
IP:	44
Cutting Size:	160*75mm



MODEL:	BE-S1865
POWER:	10W
CCT:	3000K
Lumens:	1000
IP:	44
Cutting Size:	75mm





MODEL:	9080SC
POWER:	7.5W
CCT:	3000K
Lumens:	650
IP:	20
Cutting Size:	75



MODEL:	ZG-D050F
POWER:	7.5W
CCT:	3000K
Lumens:	650
IP:	20
Cutting Size:	75mm



MODEL:	TL9080M
POWER:	7.5W
CCT:	3000K
Lumens:	650
IP:	20
Cutting Size:	100mm



MODEL:	TS 6261
POWER:	10W
CCT:	3000K
Lumens:	900
IP:	65
Cutting Size:	75mm





Fixation:	Celling Recessed
Product size:	120x120x55mm
Cutout shape/size:	■ 123x123mm
Thickness of mouting surface:	12mm/9-15mm
Available material:	Gypsum
Lamp holde:	Gu10/GU5.3



Fixation:	Celling Recessed
Product size:	124x117x60mm
Cutout shape/size:	■ 217x120mm
Thickness of mouting surface:	12mm/9-15mm
Available material:	Gypsum
Lamp holde:	Gu10/GU5.3



Fixation:	Celling Recessed
Product size:	120x120x62mm
Cutout shape/size:	■ 123x123mm
Thickness of mouting surface:	12mm/9-15mm
Available material:	Gypsum
Lamp holde:	Gu10/GU5.3

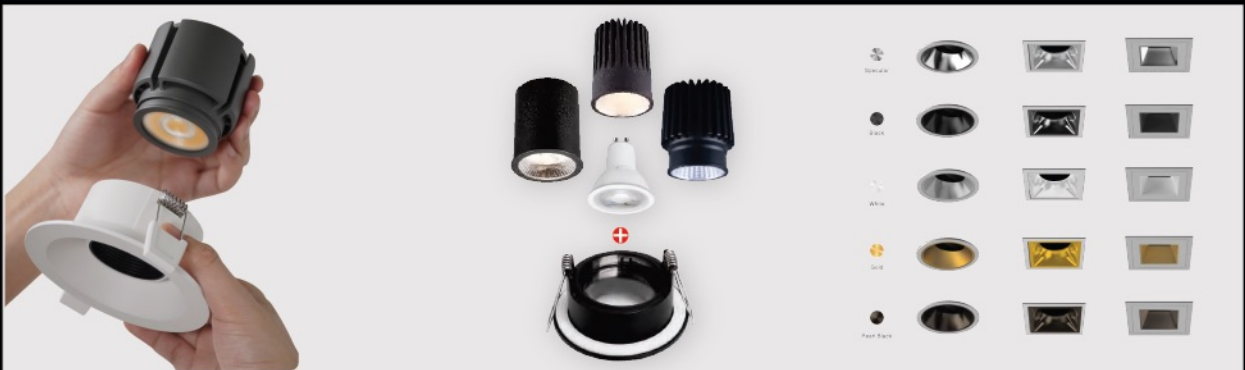
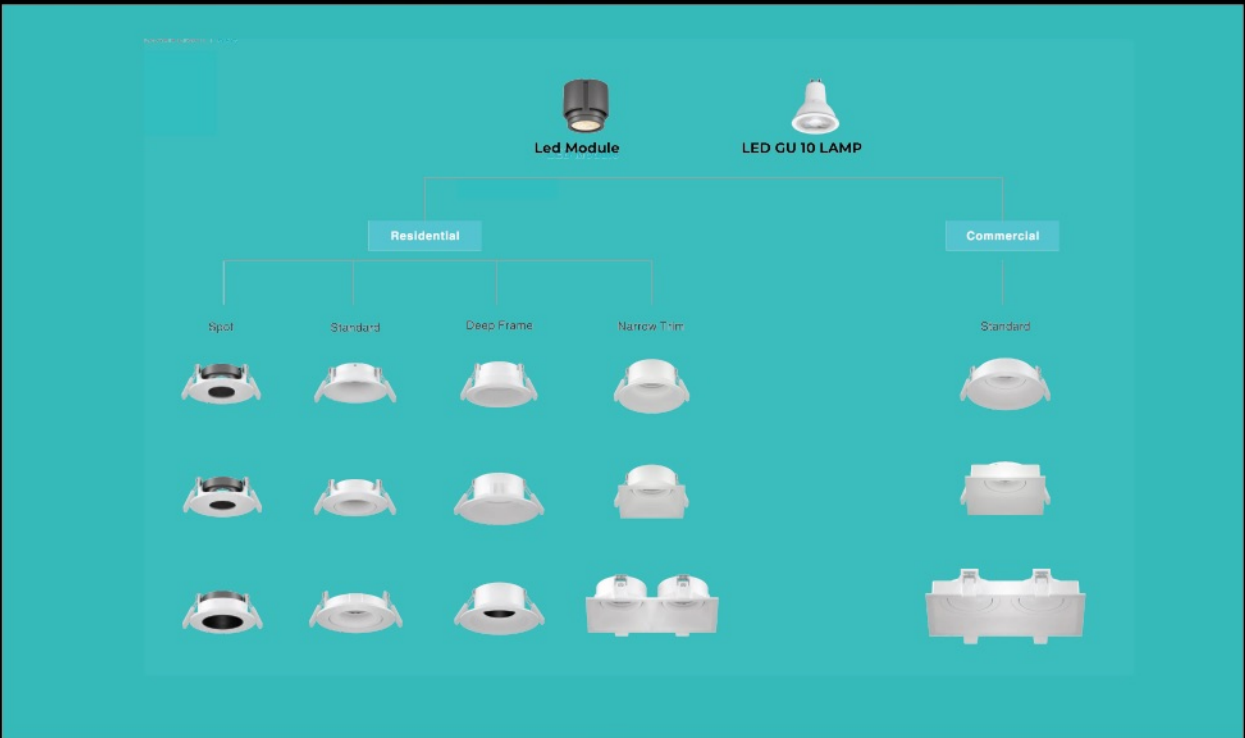


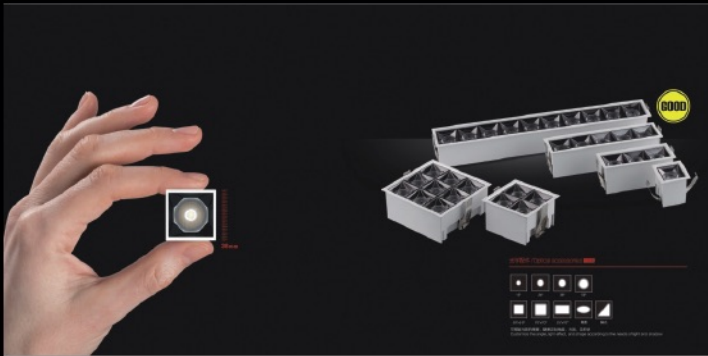
Fixation:	Celling Recessed
Product size:	100x24mm
Cutout shape/size:	● 103mm
Thickness of mouting surface:	12mm
Available material:	Gypsum
Lamp holde:	Gu10/GU5.3



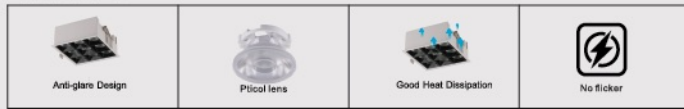


Led Modular Downlight System

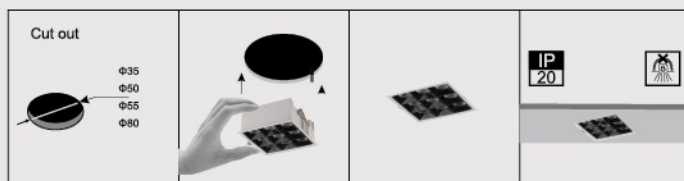




Product details:

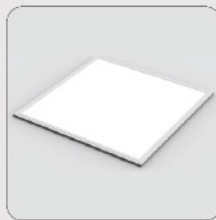


Installation:





MODEL:	60X60
POWER:	36W
CCT:	6000K
Lumens:	1130
IP:	44
Cutting Size:	59.5X59.5



MODEL:	SQUARE
POWER:	18W
CCT:	3000K
Lumens:	1800
IP:	54
Cutting Size:	15cm

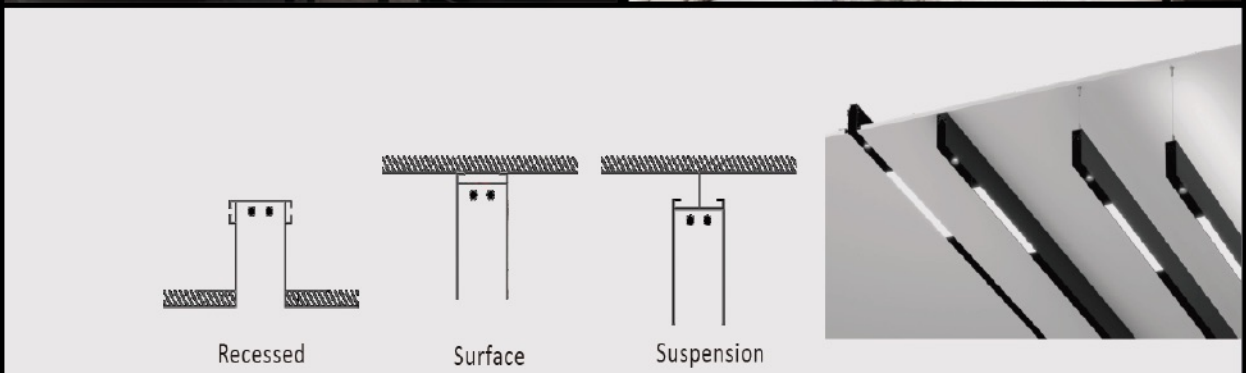


MODEL:	Universal round panel
POWER:	20W
CCT:	4000K(CCT OPTION)
Lumens:	1600
IP:	44
Cutting Size:	65-205mm



MODEL:	ROUND
POWER:	36W
CCT:	3000K
Lumens:	4320
IP:	44
Cutting Size:	20cm

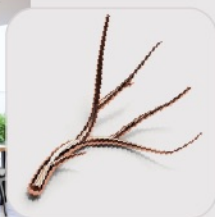
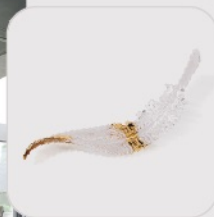






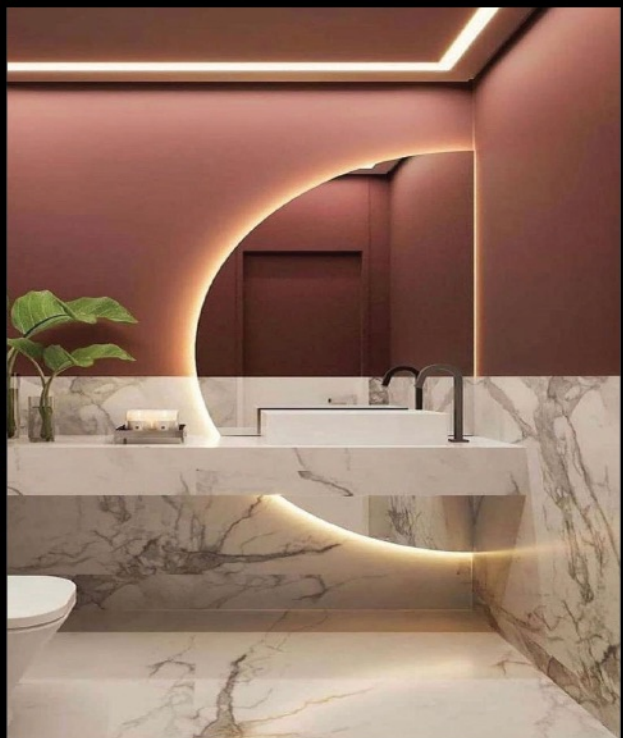
VISION LIGHTING IS A CREATOR OF UNIQUE BESPOKE LIGHTING AND ARCHITECTURAL ART INSTALLATIONS.

Shaped by impeccable design and desire for modernity, we value, above all, innovation and technology. A fascination with light and an artisan touch is at the core of our work. We are here to allow you the freedom to realize your dreams.





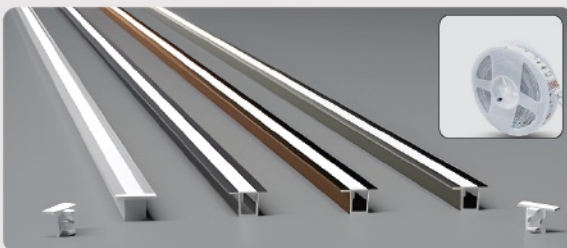
Size	60 /120 Led
Cutting Unit	6 Led
Input Voltage	12V / 24V DC
CCT	3000 / 4000/6000K
	CRI : >90
Max.Power	4.8W/9.6W /14.4W



Size	60 /120 Led
Cutting Unit	6 Led
Input Voltage	12V / 24V DC
CCT	3000 / 4000/6000K
	CRI : >90
Max.Power	4.8W/9.6W-W.P IP-67



Size :	W8mm x L5mtrs
LEDQty :	480Led/ Mtrs
Input Voltage	12V / 24V
CCT :	3000K – CRI :>90 IP 20 / 65
Max.Power	5W/10W



Size :	15000 X12 X 2.1mm
LEDQty :	6LEDs / 50mm
Input Voltage	24V DC
CCT :	3000K – CRI : >90 IP 67
Max.Power	4.8W/m Water proof



Size	60 /120 Led
Cutting Unit	6 Led
Input Voltage	12V / 24V DC
CCT	3000 / 4000/6000K
	CRI : >90
Max.Power	4.8W/9.6W /14.4W



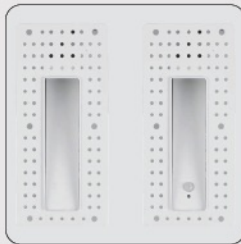


Size :	W8mm x L5mtrs
LEDQty :	480Led/ Mtrs
Input Voltage	12V / 24V
CCT :	3000K - CRI : >90 IP 20 / 65
Max.Power	5W/10W

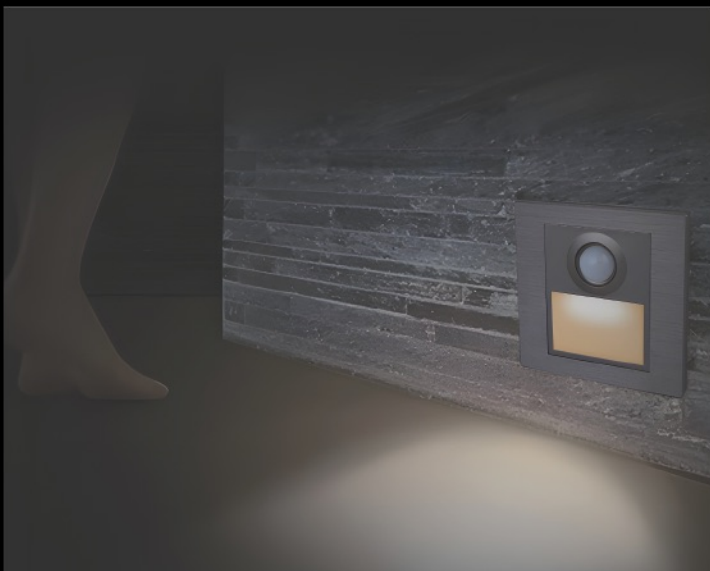




MODEL:	KS-WO20
POWER:	3W
CCT:	3000K
Size:	200
IP:	65
Cutting Size:	170*40*45mm



MODEL:	KS-F020
POWER:	3W
CCT:	3000K
SIZE:	185
IP:	65
Cutting Size:	170*33*41mm



MODEL:	KS-P08
POWER:	1.5W
CCT:	3000K
Size:	86*86*30mm
IP:	65
Cutting Size:	80*80mm

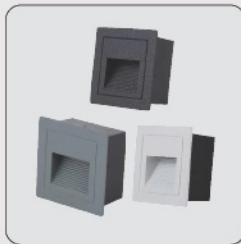


MODEL:	KS-W86
POWER:	1W
CCT:	3000K
SIZE:	80*80*45mm
IP:	65
Cutting Size:	80*80mm

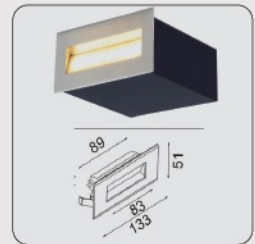




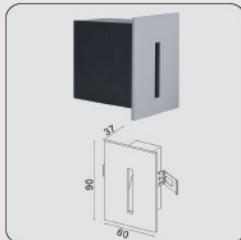
MODEL:	KS-004C
POWER:	3W
CCT:	3000K
Size:	85*85*45mm
IP:	65
Cutting Size:	75*75*35mm



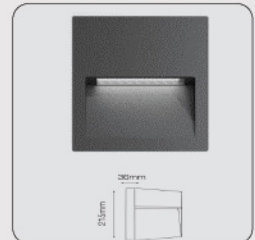
MODEL:	52302
POWER:	6*0.5W
CCT:	3000K
SIZE:	133
IP:	65
Cutting Size:	133*51mm



MODEL:	50210
POWER:	3W
CCT:	3000K
Size:	90*60mm
IP:	65
Cutting Size:	80*50mm



MODEL:	R9510S
POWER:	9W
CCT:	3000K
SIZE:	215*36mm
IP:	65
Cutting Size:	215*36





MODEL:	B2000-AD
POWER:	2*7.5W
CCT:	3000K
Size:	120mm
IP:	65



MODEL:	GW-A310
POWER:	2*3W
CCT:	3000K
SIZE:	100mm
IP:	54



MODEL:	B2000A-SS
POWER:	1*7.5W
CCT:	3000K
Size:	60mm
IP:	65



MODEL:	GW-8663
POWER:	3*6W
CCT:	3000K
SIZE:	135mm
IP:	54





MODEL:	T2159
POWER:	10W
CCT:	3000K
Size:	120mm
IP:	20



MODEL:	TS5108
POWER:	1*7.5W
CCT:	3000K
SIZE:	100mm
IP:	20



MODEL:	B2000C
POWER:	1*7.5W
CCT:	3000K
Size:	70mm
IP:	20



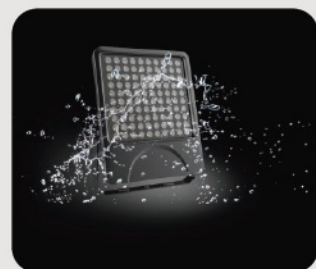
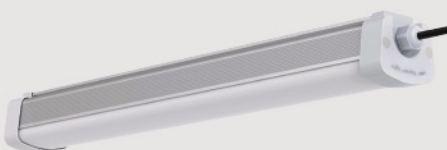
MODEL:	B2100CEIL
POWER:	1*7.5W
CCT:	3000K
SIZE:	120*60mm
IP:	65

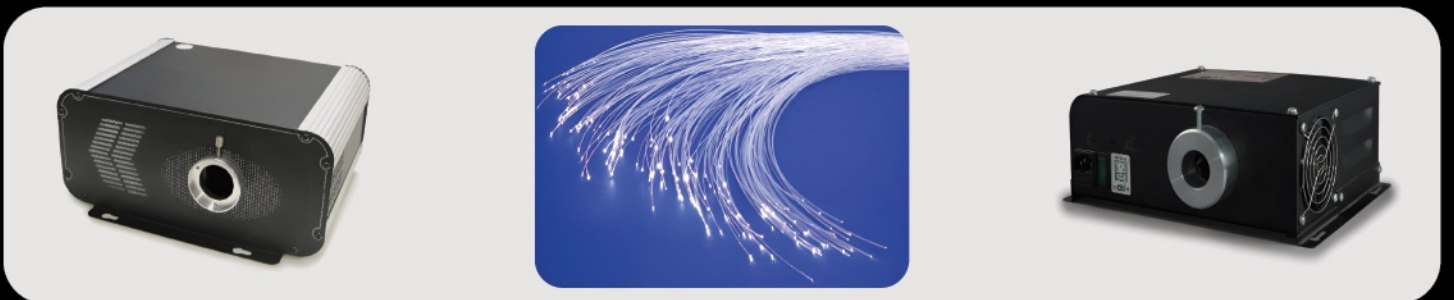




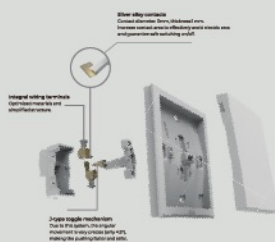




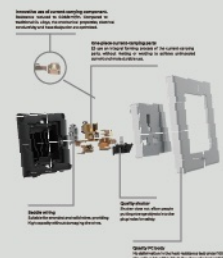















































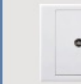




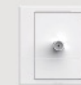












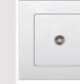


ROCKER COLOURS
White, Champagne, Grey, Black



<p>301011 1 Gang 1 Way Switch (10AX 250V)</p> 	<p>301012 1 Gang 2 Way Switch (10AX 250V)</p> 	<p>301011Y 1 Gang 1 Way Switch with Fluorescent (10AX 250V)</p> 	<p>301012Y 1 Gang 2 Way Switch with Fluorescent (10AX 250V)</p> 	<p>301026 1 Gang Intermediate Switch (10AX 250V)</p> 	<p>301026Y 1 Gang Intermediate Switch with Fluorescent (10AX 250V)</p> 	<p>301046 2 Gang Intermediate Switch (10AX 250V)</p> 	<p>301046Y 2 Gang Intermediate with Fluorescent (10AX 250V)</p> 
<p>301021 2 Gang 1 Way Switch (10AX 250V)</p> 	<p>301022 2 Gang 2 Way Switch (10AX 250V)</p> 	<p>301021Y 2 Gang 1 Way Switch with Fluorescent (10AX 250V)</p> 	<p>301022Y 2 Gang 2 Way Switch with Fluorescent (10AX 250V)</p> 	<p>302023 20 A Double Pole Switch with LED (20AX 250V)</p> 	<p>302024 20A 2 way Double Pole Switch with LED (20AX 250V)</p> 	<p>303223 32A Double Pole Switch with LED (32A 250V)</p> 	<p>303224 32A 2 Way Double Pole Switch with LED (32A 250V)</p> 
<p>301031 3 Gang 1 Way Switch (10AX 250V)</p> 	<p>301032 3 Gang 2 Way Switch (10AX 250V)</p> 	<p>301031Y 3 Gang 1 Way Switch with Fluorescent (10AX 250V)</p> 	<p>301032Y 3 Gang 2 Way Switch with Fluorescent (10AX 250V)</p> 	<p>302123 20A Double Pole Switch with LED (20AX 250V)</p> 	<p>304523 45A Double Pole Switch with LED (45A 250V)</p> 	<p>301011F 1 Gang Push-button Switch (10A 250V)</p> 	<p>301011FY 1 Gang Push-button Switch with Fluorescent (10A 250V)</p> 
<p>301041 4 Gang 1 Way Switch (10AX 250V)</p> 	<p>301042 4 Gang 2 Way Switch (10AX 250V)</p> 	<p>301041Y 4 Gang 1 Way Switch with Fluorescent (10AX 250V)</p> 	<p>301042Y 4 Gang 2 Way Switch with Fluorescent (10AX 250V)</p> 	<p>301021F 2 Gang Double Pole Switch (10A 250V)</p> 	<p>301021FY 2 Gang Push-button Switch with Fluorescent (10A 250V)</p> 	<p>306301 Doorbell Switch (10A 250V)</p> 	<p>301382B 13A BS Switched Socket (13A 250V)</p> 

Push Button Switches

Socket-Outlets

<p>301582 13A BS Switched Socket (13A 250V)</p> 	<p>301687 Schuko Socket (16A 250V)</p> 	<p>301089 Multi-standard Socket with Switch (13A 250V)</p> 	<p>301080 2 Pin Socket and Multi-standard Socket (16A 250V)</p> 	<p>301384 13A BS Switched Socket with Twin USB Chargers (13AX 250V)</p> 	<p>301385 13A BS Double Pole Switched Socket (13A 250V)</p> 	<p>301386 13A BS Switched Socket with Twin USB Chargers (13A 250V)</p> 	<p>305111 TV Outlet</p> 
<p>306725 Multi-standard Socket with Twin USB Chargers (13A 250V)</p> 	<p>301287 Twin EU-US Socket with Earth Contact (16A 250V)</p> 	<p>301072 Twin 2 Pin Socket (10A 250V)</p> 	<p>301383 13A BS Socket with Double Pole Switch (13A 250V)</p> 	<p>305114 TV Outlet with F Connector</p> 	<p>305214 Telephone Outlet</p> 	<p>305218 Data Outlet Cat.6</p> 	<p>305224 Twin Telephone Outlet (R21)</p> 
<p>304589 Twin Multi-standard Socket with Switch (13A 250V)</p> 	<p>304582 Twin BS Switched Socket (13A 250V)</p> 	<p>305228 Twin Data Outlet Cat.6</p> 	<p>305229 Telephone and Data Outlet Cat.6</p> 	<p>305218S Data Outlet Cat.6</p> 	<p>305228S Twin Data Outlet Cat.6</p> 		
<p>304581 Twin BS Switched Socket Double Pole (13A 250V)</p> 	<p>304584 Cooker Control Unit 45A DP Switch + 13A DP Switched Socket with Indicator (13A/45A 250V)</p> 	<p>305302S TV and Data Outlet Cat.6</p> 	<p>305111S TV Outlet</p> 	<p>305229S Telephone and Data Outlet Cat.6</p> 	<p>305214S Telephone Outlet</p> 		

Tel, TV and Data Outlets (4-hole)


VLT
VISION LIGHT
INNOVATIVE LIGHTING SOLUTIONS
VL

CONTACT US


Address:

Kuwait City - Qibla, Ali
AlSalem Street, Block 5,
Alnaqi Bulding No 11,
Office No.6.

ENG. MOHAMMED ASIF

 00965 9716 2442

 visionlight.kw@gmail.com

 [visionlight.kw](https://www.instagram.com/visionlight.kw)



@VISIONLIGHT.KW